



# Verification Report

**Applicant** : Shenzhen Huafurui Technology Co., Ltd.  
**Address** : Unit 1401 & 1402, 14/F, Jinqi Zhigu Mansion (No. 4 Building of Chongwen Garden), Crossing of the Liuxian Street and Tangling Road, Taoyuan Street, Nanshan District, Shenzhen, 518055, P.R. China

**Report on the submitted samples said to be:**

**Sample Name(s)** : Tablet  
**Trade Mark** : CUBOT  
**Part No.** : TAB 50  
**Sample Received Date** : June 27, 2023  
**Testing Period** : June 27, 2023 ~ July 03, 2023  
**Date of Report** : July 03, 2023  
**Testing Location** : 901, No.40 Building, Xialang Industrial Zone, Heshuikou Community, Matian Street, Guangming District, Shenzhen, Guangdong, China  
**Results** : Please refer to next page(s).

TEST REQUEST	CONCLUSION
As specified by client, based on the performed tests on submitted sample, the result of Lead(Pb), Cadmium(Cd), Mercury(Hg), Hexavalent Chromium(Cr(VI)), PBBs, PBDEs, Dibutyl Phthalate(DBP), Butylbenzyl Phthalate(BBP), Di-2-ethylhexyl Phthalate(DEHP) and Diisobutyl phthalate(DIBP) content comply with the limits set by RoHS Directive 2011/65/EU with amendment (EU) 2015/863.	PASS

Signed for and on behalf of LCS

Lily dan



**A. EU RoHS Directive 2011/65/EU and its amendment directives**

Test method: With reference to IEC 62321-1:2013&IEC 62321-2:2021&IEC 62321-3-1:2013, Screening by X-ray Fluorescence Spectroscopy (XRF).

Test result(s):

Sample No.	Sample Description	Screening Result(s)						Date of sample submission/ Resubmission
		Cd	Pb	Hg	Cr <sup>▼</sup>	Br <sup>▼</sup>		
						PBBs	PBDEs	
1	Black glass screen	BL	BL	BL	BL	BL	BL	2023-06-27
2	Transparent plastic board	BL	BL	BL	BL	BL	BL	2023-06-27
3	Frosted plastic sheet	BL	BL	BL	BL	BL	BL	2023-06-27
4	White plastic sheet	BL	BL	BL	BL	BL	BL	2023-06-27
5	Silver plastic sheet	BL	BL	BL	BL	BL	BL	2023-06-27
6	Black plastic frame	BL	BL	BL	BL	BL	BL	2023-06-27
7	White plastic patch LED light	BL	BL	BL	BL	BL	BL	2023-06-27
8	White plastic frame	BL	BL	BL	BL	BL	BL	2023-06-27
9	Silver metal plate	BL	BL	BL	BL	/	/	2023-06-27
10	Black brown metal shell	BL	BL	BL	BL	/	/	2023-06-27
11	Black plastic sheet	BL	BL	BL	BL	BL	BL	2023-06-27
12	Transparent plastic block	BL	BL	BL	BL	BL	BL	2023-06-27
13	Red/black plastic sheet	BL	BL	BL	BL	BL	BL	2023-06-27
14	Black plastic frame	BL	BL	BL	BL	BL	BL	2023-06-27
15	Gold metal nut	BL	BL	BL	BL	/	/	2023-06-27
16	Black Double-sided tape	BL	BL	BL	BL	BL	BL	2023-06-27
17	Black gray metal buttons	BL	BL	BL	BL	/	/	2023-06-27
18	Black rubber sheet	BL	BL	BL	BL	BL	BL	2023-06-27
19	Silver gray adhesive tape	BL	BL	BL	BL	BL	BL	2023-06-27
20	Copper colored metal sheet	BL	BL	BL	BL	/	/	2023-06-27
21	Black tape	BL	BL	BL	BL	BL	BL	2023-06-27
22	Grey foam sheet	BL	BL	BL	BL	BL	BL	2023-06-27
23	Blue adhesive block	BL	BL	BL	BL	BL	BL	2023-06-27
24	Silver metal sheet	BL	BL	BL	BL	/	/	2023-06-27
25	Silver metal screw	BL	BL	BL	BL	/	/	2023-06-27
26	Silver metal screw	BL	BL	BL	BL	/	/	2023-06-27
27	Silver metal strip	BL	BL	BL	BL	/	/	2023-06-27



Shenzhen LCS Compliance Testing Laboratory Ltd.

Add: 901, No.40 Building, Xialang Industrial Zone, Heshuikou Community, Matian Street, Guangming District, Shenzhen, Guangdong, China

Tel: +(86) 0755-82591330 | E-mail: webmaster@lcs-cert.com | Web: www.lcs-cert.com

Scan code to check authenticity



Sample No.	Sample Description	Screening Result(s)						Date of sample submission/ Resubmission
		Cd	Pb	Hg	Cr <sup>▼</sup>	Br <sup>▼</sup>		
						PBBs	PBDEs	
28	White paper	BL	BL	BL	BL	BL	BL	2023-06-27
29	Silver metal sheet	BL	BL	BL	BL	/	/	2023-06-27
30	Silver metal cover	BL	BL	BL	BL	/	/	2023-06-27
31	Yellow FPC	BL	BL	BL	BL	BL	BL	2023-06-27
32	Silver metal frame	BL	BL	BL	BL	/	/	2023-06-27
33	Black FPC	BL	BL	BL	BL	BL	BL	2023-06-27
34	Yellow plastic LED light	BL	BL	BL	BL	BL	BL	2023-06-27
35	Silver metal shell	BL	BL	BL	BL	/	/	2023-06-27
36	Silver metal magnet	BL	BL	BL	BL	/	/	2023-06-27
37	Copper metal coil	BL	BL	BL	BL	/	/	2023-06-27
38	Transparent glass sheet	BL	BL	BL	BL	BL	BL	2023-06-27
39	Black plastic shell	BL	BL	BL	BL	BL	BL	2023-06-27
40	Transparent plastic block	BL	BL	BL	BL	BL	BL	2023-06-27
41	Color photosensitive film	BL	BL	BL	BL	BL	BL	2023-06-27
42	Silver metal sheet	BL	BL	BL	BL	/	/	2023-06-27
43	Black plastic shell	BL	BL	BL	BL	BL	BL	2023-06-27
44	Silver metal contact piece	BL	BL	BL	BL	/	/	2023-06-27
45	Black plastic wire cover	BL	BL	BL	BL	BL	BL	2023-06-27
46	Gold metal head	BL	BL	BL	BL	/	/	2023-06-27
47	Green plastic PCB	BL	BL	BL	BL	BL	BL	2023-06-27
48	Black plastic strip	BL	BL	BL	BL	BL	BL	2023-06-27
49	Grey plastic interface	BL	BL	BL	BL	BL	BL	2023-06-27
50	Gold metal contact	BL	BL	BL	BL	/	/	2023-06-27
51	Silver metal shell	BL	BL	BL	BL	/	/	2023-06-27
52	Black plastic block	BL	BL	BL	BL	BL	BL	2023-06-27
53	Gold metal contact	BL	BL	BL	BL	/	/	2023-06-27
54	Green plastic PCB	BL	BL	BL	BL	BL	BL	2023-06-27
55	Black plastic diode	BL	BL	BL	BL	BL	BL	2023-06-27
56	Black plastic strip	BL	BL	BL	BL	BL	BL	2023-06-27
57	White plastic interface	BL	BL	BL	BL	BL	BL	2023-06-27
58	Gold metal contact	BL	BL	BL	BL	/	/	2023-06-27
59	Black plastic strip	BL	BL	BL	BL	BL	BL	2023-06-27
60	White plastic	BL	BL	BL	BL	BL	BL	2023-06-27



Shenzhen LCS Compliance Testing Laboratory Ltd.

Add: 901, No.40 Building, Xialang Industrial Zone, Heshuikou Community, Matian Street, Guangming District, Shenzhen, Guangdong, China

Tel: +(86) 0755-82591330 | E-mail: webmaster@lcs-cert.com | Web: www.lcs-cert.com

Scan code to check authenticity



Sample No.	Sample Description	Screening Result(s)						Date of sample submission/ Resubmission
		Cd	Pb	Hg	Cr <sup>▼</sup>	Br <sup>▼</sup>		
						PBBs	PBDEs	
	interface							
61	Gold metal contact	BL	BL	BL	BL	/	/	2023-06-27
62	Silver metal sheet	BL	BL	BL	BL	/	/	2023-06-27
63	Black plastic PCB	BL	BL	BL	BL	BL	BL	2023-06-27
64	Black plastic chip	BL	BL	BL	BL	BL	BL	2023-06-27
65	Black plastic strip	BL	BL	BL	BL	BL	BL	2023-06-27
66	Black gray plastic interface	BL	BL	BL	BL	BL	BL	2023-06-27
67	Gold metal contact	BL	BL	BL	BL	/	/	2023-06-27
68	Brown metal core	BL	BL	BL	BL	/	/	2023-06-27
69	Beige plastic interface	BL	BL	BL	BL	BL	BL	2023-06-27
70	Silver metal stylus	BL	BL	BL	BL	/	/	2023-06-27
71	Silver metal crystal oscillator	BL	BL	BL	BL	/	/	2023-06-27
72	Black plastic chip	BL	BL	BL	BL	BL	BL	2023-06-27
73	Ferrous magnetic core	BL	BL	BL	BL	/	/	2023-06-27
74	Black plastic sheet	BL	BL	BL	BL	BL	BL	2023-06-27
75	Green plastic PCB	BL	BL	BL	BL	BL	BL	2023-06-27
76	Silver metal sheet	BL	BL	BL	BL	/	/	2023-06-27
77	Black substance	BL	BL	BL	BL	BL	BL	2023-06-27
78	Silver metal shell	BL	BL	BL	BL	/	/	2023-06-27
79	Silver metal magnetic coil	BL	BL	BL	BL	/	/	2023-06-27
80	White plastic block	BL	BL	BL	BL	BL	BL	2023-06-27
81	Copper metal coil	BL	BL	BL	BL	/	/	2023-06-27
82	Silver metal block	BL	BL	BL	BL	/	/	2023-06-27
83	Gold metal ring	BL	BL	BL	BL	/	/	2023-06-27
84	Green plastic sheet	BL	BL	BL	BL	BL	BL	2023-06-27
85	Black plastic shell	BL	BL	BL	BL	BL	BL	2023-06-27
86	Silver metal sheet	BL	BL	BL	BL	/	/	2023-06-27
87	Transparent film	BL	BL	BL	BL	BL	BL	2023-06-27
88	Black plastic sheet	BL	BL	BL	BL	BL	BL	2023-06-27
89	Copper metal coil	BL	BL	BL	BL	/	/	2023-06-27
90	Black plastic frame	BL	BL	BL	BL	BL	BL	2023-06-27
91	Silver metal sheet	BL	BL	BL	BL	/	/	2023-06-27
92	Silver metal magnet	BL	BL	BL	BL	/	/	2023-06-27



Shenzhen LCS Compliance Testing Laboratory Ltd.

Add: 901, No.40 Building, Xialang Industrial Zone, Heshuikou Community, Matian Street, Guangming District, Shenzhen, Guangdong, China

Tel: +(86) 0755-82591330 | E-mail: webmaster@lcs-cert.com | Web: www.lcs-cert.com

Scan code to check authenticity



Sample No.	Sample Description	Screening Result(s)						Date of sample submission/ Resubmission
		Cd	Pb	Hg	Cr <sup>▼</sup>	Br <sup>▼</sup>		
						PBBs	PBDEs	
93	Red plastic wire cover	BL	BL	BL	BL	BL	BL	2023-06-27
94	Black plastic wire cover	BL	BL	BL	BL	BL	BL	2023-06-27
95	Silver metal wire core	BL	BL	BL	BL	/	/	2023-06-27
96	White plastic terminal	BL	BL	BL	BL	BL	BL	2023-06-27
97	White soft rubber	BL	BL	BL	BL	BL	BL	2023-06-27
98	Transparent soft rubber	BL	BL	BL	BL	BL	BL	2023-06-27
99	Silver metal shell	BL	BL	BL	BL	/	/	2023-06-27
100	White plastic block	BL	BL	BL	BL	BL	BL	2023-06-27
101	Silver metal contact piece	BL	BL	BL	BL	/	/	2023-06-27
102	White plastic outer cover	BL	BL	BL	BL	BL	BL	2023-06-27
103	Black plastic wire cover	BL	BL	BL	BL	BL	BL	2023-06-27
104	Green plastic wire cover	BL	BL	BL	BL	BL	BL	2023-06-27
105	White plastic wire cover	BL	BL	BL	BL	BL	BL	2023-06-27
106	Red plastic wire cover	BL	BL	BL	BL	BL	BL	2023-06-27
107	Copper colored metal wire core	BL	BL	BL	BL	/	/	2023-06-27
108	Silver metal shell	BL	BL	BL	BL	/	/	2023-06-27
109	Beige plastic shell	BL	BL	BL	BL	BL	BL	2023-06-27
110	Silver metal sheet	BL	BL	BL	BL	/	/	2023-06-27
111	Black plastic block	BL	BL	BL	BL	BL	BL	2023-06-27
112	Silver metal contact piece	BL	BL	BL	BL	/	/	2023-06-27
113	Green plastic PCB	BL	BL	BL	BL	BL	BL	2023-06-27
114	Silver metal solder	BL	BL	BL	BL	/	/	2023-06-27
115	White plastic shell	BL	BL	BL	BL	BL	BL	2023-06-27
116	Black mesh	BL	BL	BL	BL	BL	BL	2023-06-27
117	White foam adhesive	BL	BL	BL	BL	BL	BL	2023-06-27
118	Transparent film	BL	BL	BL	BL	BL	BL	2023-06-27
119	Copper metal coil	BL	BL	BL	BL	/	/	2023-06-27
120	Silver metal shell	BL	BL	BL	BL	/	/	2023-06-27
121	Silver metal magnet	BL	BL	BL	BL	/	/	2023-06-27
122	Green plastic PCB	BL	BL	BL	BL	BL	BL	2023-06-27



Shenzhen LCS Compliance Testing Laboratory Ltd.

Add: 901, No.40 Building, Xialang Industrial Zone, Heshuikou Community, Matian Street, Guangming District, Shenzhen, Guangdong, China

Tel: +(86) 0755-82591330 | E-mail: webmaster@lcs-cert.com | Web: www.lcs-cert.com

Scan code to check authenticity



Sample No.	Sample Description	Screening Result(s)						Date of sample submission/ Resubmission
		Cd	Pb	Hg	Cr <sup>▼</sup>	Br <sup>▼</sup>		
						PBBs	PBDEs	
123	White plastic outer cover	BL	BL	BL	BL	BL	BL	2023-06-27
124	Green metal enameled wire	BL	BL	BL	BL	/	/	2023-06-27
125	Blue metal enameled wire	BL	BL	BL	BL	/	/	2023-06-27
126	White soft rubber	BL	BL	BL	BL	BL	BL	2023-06-27
127	Black plastic bracket	BL	BL	BL	BL	BL	BL	2023-06-27
128	Silver metal plug	BL	BL	BL	BL	/	/	2023-06-27
129	White plastic shell	BL	BL	BL	BL	BL	BL	2023-06-27
130	Silver metal solder	BL	BL	BL	BL	/	/	2023-06-27
131	Green plastic PCB	BL	BL	BL	BL	BL	BL	2023-06-27
132	Silver metal shrapnel	BL	BL	BL	BL	/	/	2023-06-27
133	Gold metal body	BL	BL	BL	BL	/	/	2023-06-27
134	White soft rubber	BL	BL	BL	BL	BL	BL	2023-06-27
135	Silver metal shell	BL	BL	BL	BL	/	/	2023-06-27
136	Beige plastic shell	BL	BL	BL	BL	BL	BL	2023-06-27
137	Transparent soft rubber	BL	BL	BL	BL	BL	BL	2023-06-27
138	Silver metal sheet	BL	BL	BL	BL	/	/	2023-06-27
139	Black plastic block	BL	BL	BL	BL	BL	BL	2023-06-27
140	Silver metal contact piece	BL	BL	BL	BL	/	/	2023-06-27
141	Blue plastic PCB	BL	BL	BL	BL	BL	BL	2023-06-27
142	Silver metal solder	BL	BL	BL	BL	/	/	2023-06-27
143	White plastic outer cover	BL	BL	BL	BL	BL	BL	2023-06-27
144	Black plastic wire cover	BL	BL	BL	BL	BL	BL	2023-06-27
145	White plastic wire cover	BL	BL	BL	BL	BL	BL	2023-06-27
146	Yellow plastic wire cover	BL	BL	BL	BL	BL	BL	2023-06-27
147	Red plastic wire cover	BL	BL	BL	BL	BL	BL	2023-06-27
148	Copper colored metal wire core	BL	BL	BL	BL	/	/	2023-06-27





Note:

- Results were obtained by XRF for primary screening, and further chemical testing by ICP(for Cd, Pb, Hg), UV-Vis(for Cr(VI)) and GC-MS(for PBBs, PBDEs) are recommended to be performed, if the concentration exceeds the below warning value according to IEC 62321-3-1:2013(Unit: mg/kg).

Element	Polymers	Metals	Composite material
Cd	$BL \leq (70-3\sigma) < X < (130+3\sigma) \leq OL$	$BL \leq (70-3\sigma) < X < (130+3\sigma) \leq OL$	$LOD < X < (150+3\sigma) \leq OL$
Pb	$BL \leq (700-3\sigma) < X < (1300+3\sigma) \leq OL$	$BL \leq (700-3\sigma) < X < (1300+3\sigma) \leq OL$	$BL \leq (500-3\sigma) < X < (1500+3\sigma) \leq OL$
Hg	$BL \leq (700-3\sigma) < X < (1300+3\sigma) \leq OL$	$BL \leq (700-3\sigma) < X < (1300+3\sigma) \leq OL$	$BL \leq (500-3\sigma) < X < (1500+3\sigma) \leq OL$
Cr	$BL \leq (700-3\sigma) < X$	$BL \leq (700-3\sigma) < X$	$BL \leq (500-3\sigma) < X$
Br	$BL \leq (300-3\sigma) < X$	N/A	$BL \leq (250-3\sigma) < X$

Remark:

- BL= Below Limit
  - OL= Over Limit
  - X= The range of needing to do further testing
  - 3σ= The reproducibility of analytical instruments
  - N/A= Not applicable
  - LOD= Detection limit
- The XRF screening test for RoHS elements – The reading may be different to the actual content in the sample be of non-uniformity composition.
  - The maximum permissible limit is quoted from the document RoHS Directive 2011/65/EU with amendment (EU) 2015/863.
  - ▼=For restricted substances PBBs and PBDEs, the results show the total Br content, the restricted substance was Cr(VI), and the results showed the total Cr content.





RoHS Restricted Substances	Maximum Concentration Value (mg/kg) (by weight in homogenous materials)
Cadmium(Cd)	100
Lead(Pb)	1000
Mercury(Hg)	1000
Hexavalent Chromium(Cr(VI))	1000
Polybrominated biphenyls(PBBs)	1000
Polybrominated diphenylethers(PBDEs)	1000
Dibutyl Phthalate(DBP)	1000
Butylbenzyl Phthalate(BBP)	1000
Di-(2-ethylhexyl) Phthalate(DEHP)	1000
Diisobutyl phthalate(DIBP)	1000

**Disclaimers:**

This XRF Screening report is for reference purposes only. The applicant shall make its/his/her own judgment as to whether the information provided in this XRF screening report is sufficient for its/his/her purposes. The result shown in this XRF screening report will differ based on various factors, including but not limited to, the sample size, thickness, area, surface flatness, equipment parameters and matrix effect (e.g. plastic, rubber, metal, glass, ceramic etc.). Further wet chemical pre-treatment with relevant chemical equipment analysis are required to obtain quantitative data.







**B. EU RoHS Directive 2011/65/EU with amendment (EU) 2015/863 on Lead(Pb), Cadmium(Cd), Mercury(Hg), Hexavalent Chromium(Cr(VI)), PBBs, PBDEs, DBP, BBP, DEHP & DIBP content**

Test method:

Lead(Pb) & Cadmium(Cd) Content:

Refer to IEC 62321-5:2013, by acid digestion and analysis was performed by inductively coupled plasma optical emission spectrometer (ICP-OES) or atomic absorption spectrometer (AAS).

Mercury(Hg) Content:

Refer to IEC 62321-4:2013+AMD1:2017 CSV, by acid digestion and analysis was performed by inductively coupled plasma optical emission spectrometer (ICP-OES).

Hexavalent Chromium(Cr(VI)) Content:

Refer to IEC 62321-7-1:2015 or IEC 62321-7-2:2017, analysis was performed by UV-visible spectrophotometer (UV-Vis).

PBBs & PBDEs Content:

Refer to IEC 62321-6:2015, by solvent extraction and analysis was performed by gas chromatography-mass spectrometer (GC-MS).

Phthalates(DBP, BBP, DEHP & DIBP) Content:

Refer to IEC 62321-8:2017, by solvent extraction and analysis was performed by gas chromatography-mass spectrometer (GC-MS).

Test result(s):

**1) Phthalates(DBP, BBP, DEHP & DIBP)**

Tested Item(s)	MDL (mg/kg)	Test Result(s) (mg/kg)				Limit (mg/kg)
		45	93	94	102	
Dibutyl Phthalate(DBP) Content	50	N.D.	N.D.	N.D.	N.D.	1000
Butylbenzyl Phthalate(BBP) Content	50	N.D.	N.D.	N.D.	N.D.	1000
Di-(2-ethylhexyl) Phthalate(DEHP) Content	50	N.D.	N.D.	N.D.	N.D.	1000
Diisobutyl phthalate(DIBP) Content	50	N.D.	N.D.	N.D.	N.D.	1000

Tested Item(s)	MDL (mg/kg)	Test Result(s) (mg/kg)				Limit (mg/kg)
		103	104	105	106	
Dibutyl Phthalate(DBP) Content	50	N.D.	N.D.	N.D.	N.D.	1000
Butylbenzyl Phthalate(BBP) Content	50	N.D.	N.D.	N.D.	N.D.	1000
Di-(2-ethylhexyl) Phthalate(DEHP) Content	50	N.D.	N.D.	N.D.	N.D.	1000
Diisobutyl phthalate(DIBP) Content	50	N.D.	N.D.	N.D.	N.D.	1000





Tested Item(s)	MDL (mg/kg)	Test Result(s) (mg/kg)				Limit (mg/kg)
		143	144	145	146	
Dibutyl Phthalate(DBP) Content	50	N.D.	N.D.	N.D.	N.D.	1000
Butylbenzyl Phthalate(BBP) Content	50	N.D.	N.D.	N.D.	N.D.	1000
Di-(2-ethylhexyl) Phthalate(DEHP) Content	50	N.D.	N.D.	N.D.	N.D.	1000
Diisobutyl phthalate(DIBP) Content	50	N.D.	N.D.	N.D.	N.D.	1000

Tested Item(s)	MDL (mg/kg)	Test Result(s) (mg/kg)			Limit (mg/kg)
		147	123	141	
Dibutyl Phthalate(DBP) Content	50	N.D.	N.D.	N.D.	1000
Butylbenzyl Phthalate(BBP) Content	50	N.D.	N.D.	N.D.	1000
Di-(2-ethylhexyl) Phthalate(DEHP) Content	50	N.D.	N.D.	N.D.	1000
Diisobutyl phthalate(DIBP) Content	50	N.D.	N.D.	N.D.	1000

Tested Item(s)	MDL (mg/kg)	Test Result(s) (mg/kg)	Limit (mg/kg)
		1+2+3+4+5+6	
Dibutyl Phthalate(DBP) Content	50	N.D.	1000
Butylbenzyl Phthalate(BBP) Content	50	N.D.	1000
Di-(2-ethylhexyl) Phthalate(DEHP) Content	50	N.D.	1000
Diisobutyl phthalate(DIBP) Content	50	N.D.	1000

Tested Item(s)	MDL (mg/kg)	Test Result(s) (mg/kg)	Limit (mg/kg)
		7+8+11+12+13+14	
Dibutyl Phthalate(DBP) Content	50	N.D.	1000
Butylbenzyl Phthalate(BBP) Content	50	N.D.	1000
Di-(2-ethylhexyl) Phthalate(DEHP) Content	50	N.D.	1000
Diisobutyl phthalate(DIBP) Content	50	N.D.	1000





Tested Item(s)	MDL (mg/kg)	Test Result(s) (mg/kg)	Limit (mg/kg)
		16+18+19+21+22+23	
Dibutyl Phthalate(DBP) Content	50	N.D.	1000
Butylbenzyl Phthalate(BBP) Content	50	N.D.	1000
Di-(2-ethylhexyl) Phthalate(DEHP) Content	50	N.D.	1000
Diisobutyl phthalate(DIBP) Content	50	N.D.	1000

Tested Item(s)	MDL (mg/kg)	Test Result(s) (mg/kg)	Limit (mg/kg)
		28+31+33+34+38+39	
Dibutyl Phthalate(DBP) Content	50	N.D.	1000
Butylbenzyl Phthalate(BBP) Content	50	N.D.	1000
Di-(2-ethylhexyl) Phthalate(DEHP) Content	50	N.D.	1000
Diisobutyl phthalate(DIBP) Content	50	N.D.	1000

Tested Item(s)	MDL (mg/kg)	Test Result(s) (mg/kg)	Limit (mg/kg)
		40+41+43+47+48+49	
Dibutyl Phthalate(DBP) Content	50	N.D.	1000
Butylbenzyl Phthalate(BBP) Content	50	N.D.	1000
Di-(2-ethylhexyl) Phthalate(DEHP) Content	50	N.D.	1000
Diisobutyl phthalate(DIBP) Content	50	N.D.	1000

Tested Item(s)	MDL (mg/kg)	Test Result(s) (mg/kg)	Limit (mg/kg)
		52+54+55+56+57+59	
Dibutyl Phthalate(DBP) Content	50	N.D.	1000
Butylbenzyl Phthalate(BBP) Content	50	N.D.	1000
Di-(2-ethylhexyl) Phthalate(DEHP) Content	50	N.D.	1000
Diisobutyl phthalate(DIBP) Content	50	N.D.	1000





Tested Item(s)	MDL (mg/kg)	Test Result(s) (mg/kg)	Limit (mg/kg)
		60+63+64+65+66+69	
Dibutyl Phthalate(DBP) Content	50	N.D.	1000
Butylbenzyl Phthalate(BBP) Content	50	N.D.	1000
Di-(2-ethylhexyl) Phthalate(DEHP) Content	50	N.D.	1000
Diisobutyl phthalate(DIBP) Content	50	N.D.	1000

Tested Item(s)	MDL (mg/kg)	Test Result(s) (mg/kg)	Limit (mg/kg)
		72+74+75+77+80+84	
Dibutyl Phthalate(DBP) Content	50	N.D.	1000
Butylbenzyl Phthalate(BBP) Content	50	N.D.	1000
Di-(2-ethylhexyl) Phthalate(DEHP) Content	50	N.D.	1000
Diisobutyl phthalate(DIBP) Content	50	N.D.	1000

Tested Item(s)	MDL (mg/kg)	Test Result(s) (mg/kg)	Limit (mg/kg)
		85+87+88+90+96+97	
Dibutyl Phthalate(DBP) Content	50	N.D.	1000
Butylbenzyl Phthalate(BBP) Content	50	N.D.	1000
Di-(2-ethylhexyl) Phthalate(DEHP) Content	50	N.D.	1000
Diisobutyl phthalate(DIBP) Content	50	N.D.	1000

Tested Item(s)	MDL (mg/kg)	Test Result(s) (mg/kg)	Limit (mg/kg)
		98+100+109+111+113+115	
Dibutyl Phthalate(DBP) Content	50	N.D.	1000
Butylbenzyl Phthalate(BBP) Content	50	N.D.	1000
Di-(2-ethylhexyl) Phthalate(DEHP) Content	50	N.D.	1000
Diisobutyl phthalate(DIBP) Content	50	N.D.	1000





Tested Item(s)	MDL (mg/kg)	Test Result(s) (mg/kg)	Limit (mg/kg)
		116+117+118+122+126+127	
Dibutyl Phthalate(DBP) Content	50	N.D.	1000
Butylbenzyl Phthalate(BBP) Content	50	N.D.	1000
Di-(2-ethylhexyl) Phthalate(DEHP) Content	50	N.D.	1000
Diisobutyl phthalate(DIBP) Content	50	N.D.	1000

Tested Item(s)	MDL (mg/kg)	Test Result(s) (mg/kg)	Limit (mg/kg)
		129+131+134+136+137+139	
Dibutyl Phthalate(DBP) Content	50	N.D.	1000
Butylbenzyl Phthalate(BBP) Content	50	N.D.	1000
Di-(2-ethylhexyl) Phthalate(DEHP) Content	50	N.D.	1000
Diisobutyl phthalate(DIBP) Content	50	N.D.	1000

## Note:

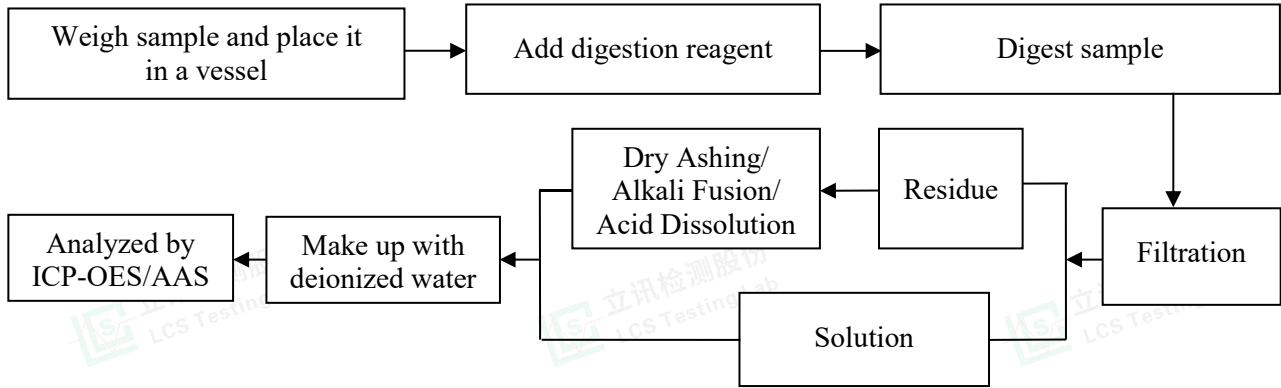
- MDL = Method Detection Limit
- N.D. = Not Detected (<MDL)
- mg= milligram
- According to customer's requirement, only the appointed materials have been tested.



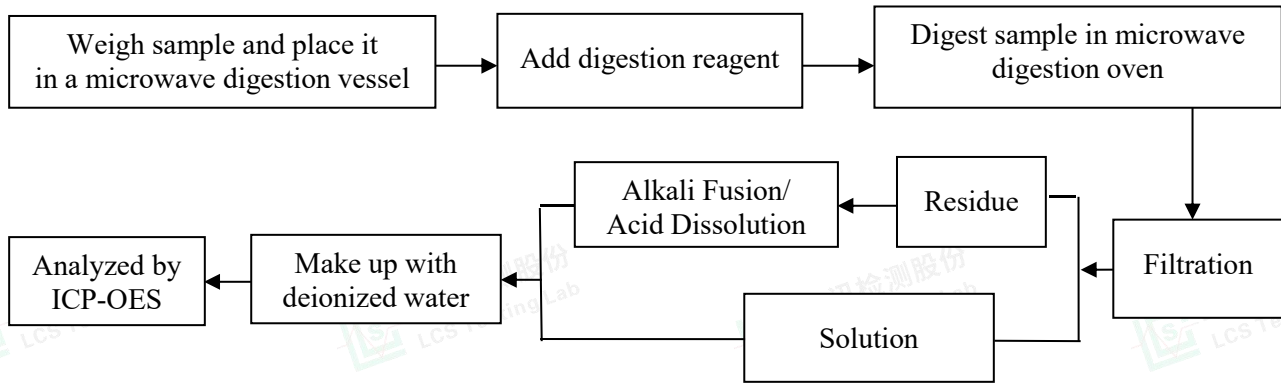


### Test Process

#### 1. Lead(Pb) & Cadmium(Cd): IEC 62321-5:2013

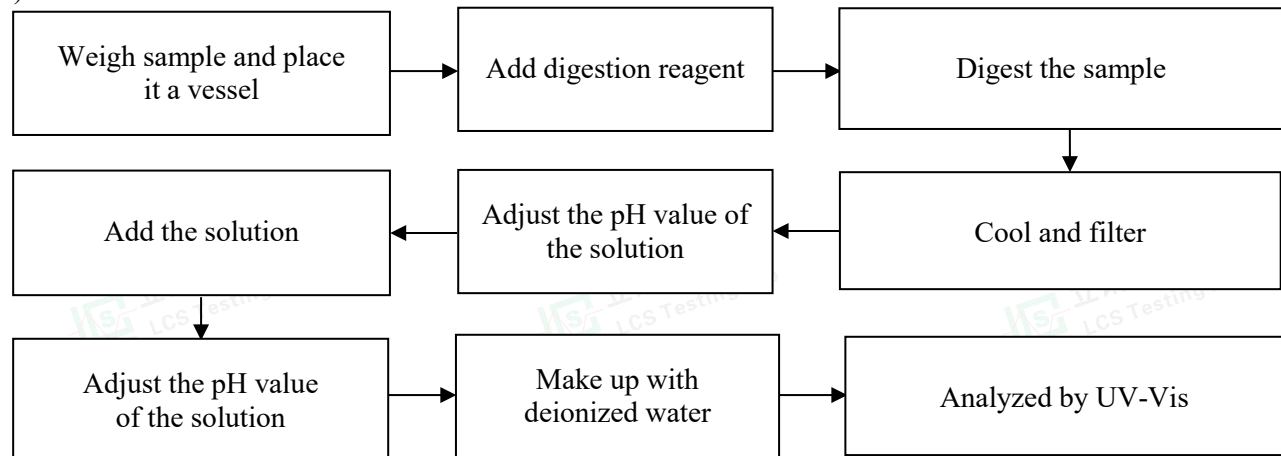


#### 2. Mercury(Hg): IEC 62321-4:2013+AMD1:2017 CSV



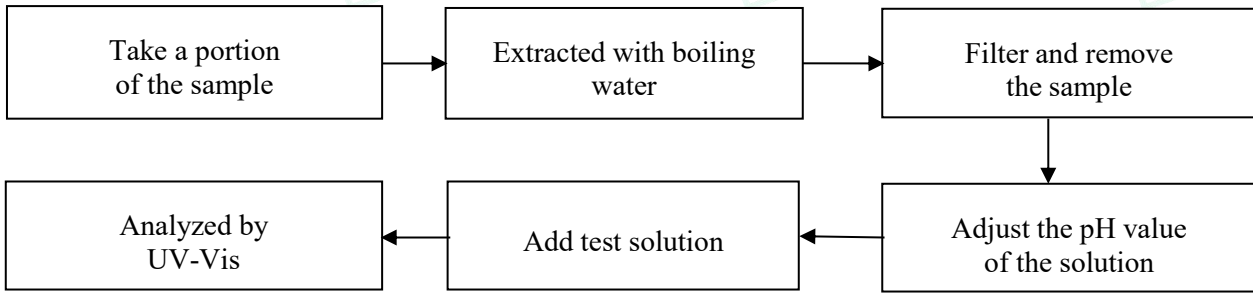
#### 3. Hexavalent Chromium(Cr(VI))

##### 1) IEC 62321-7-2:2017

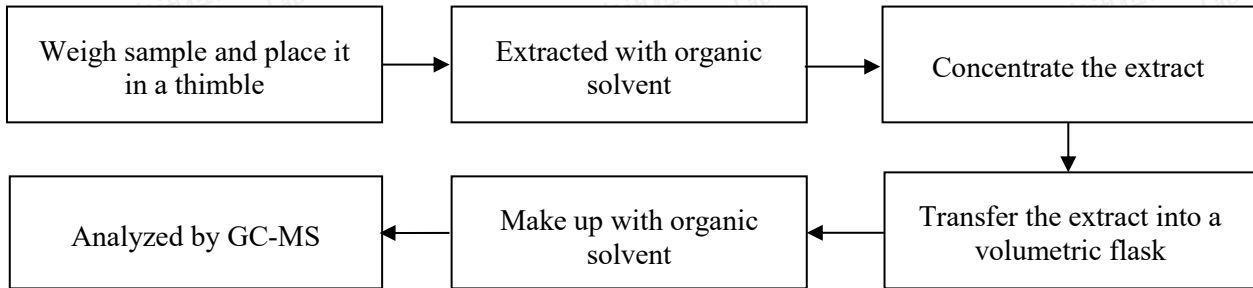




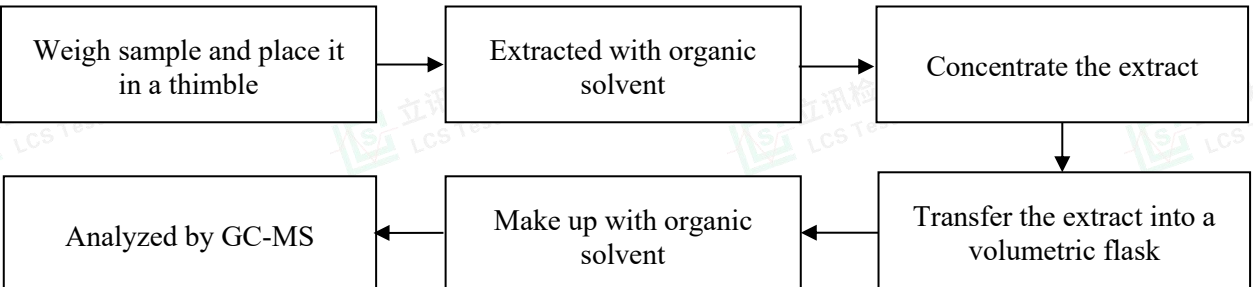
2) IEC 62321-7-1:2015



4. Polybrominated Biphenyls(PBBs) & Polybrominated Diphenyl Ethers(PBDEs) : IEC 62321-6:2015



5. Phthalates(DBP, BBP, DEHP & DIBP) : IEC 62321-8:2017

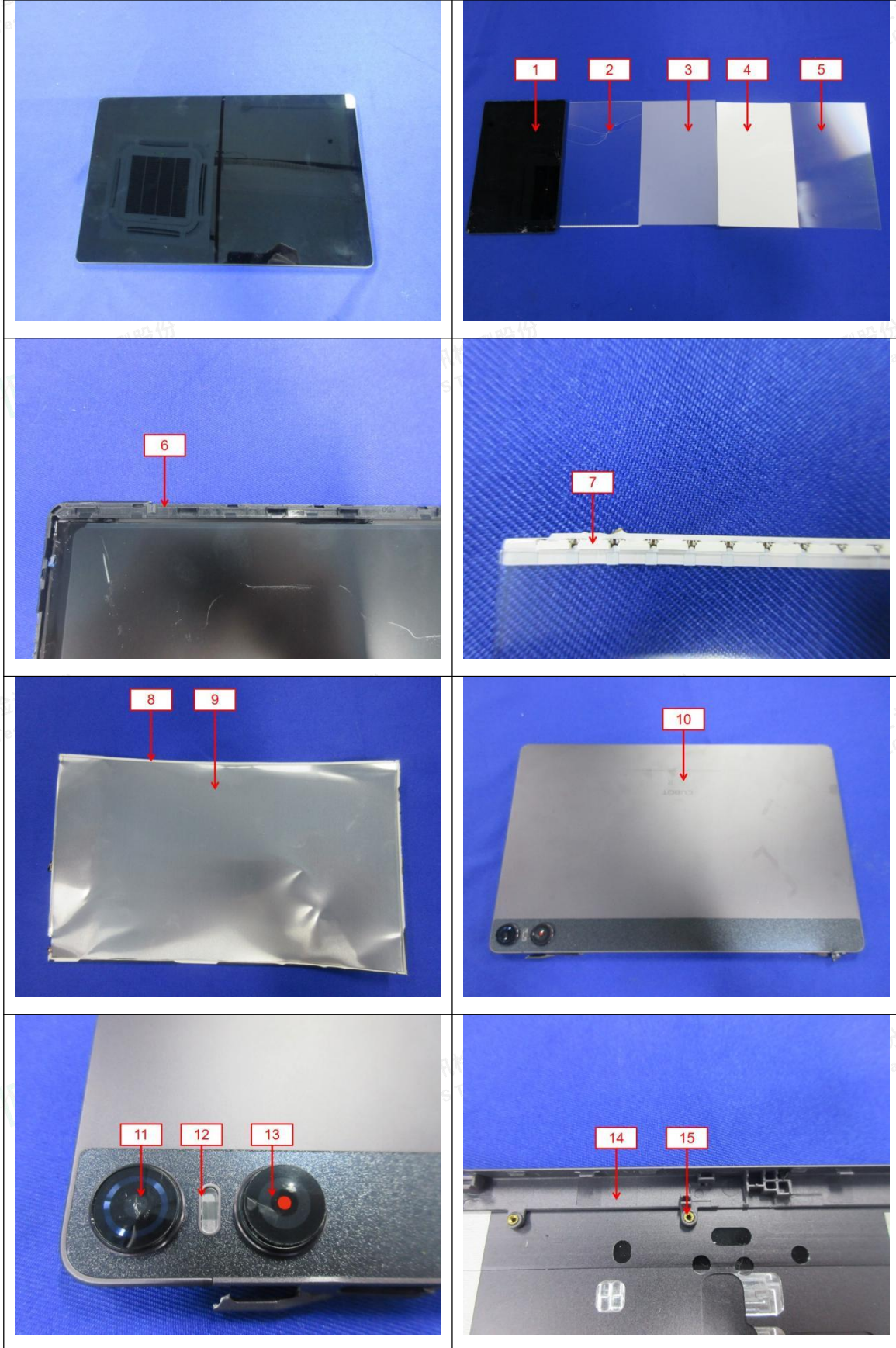


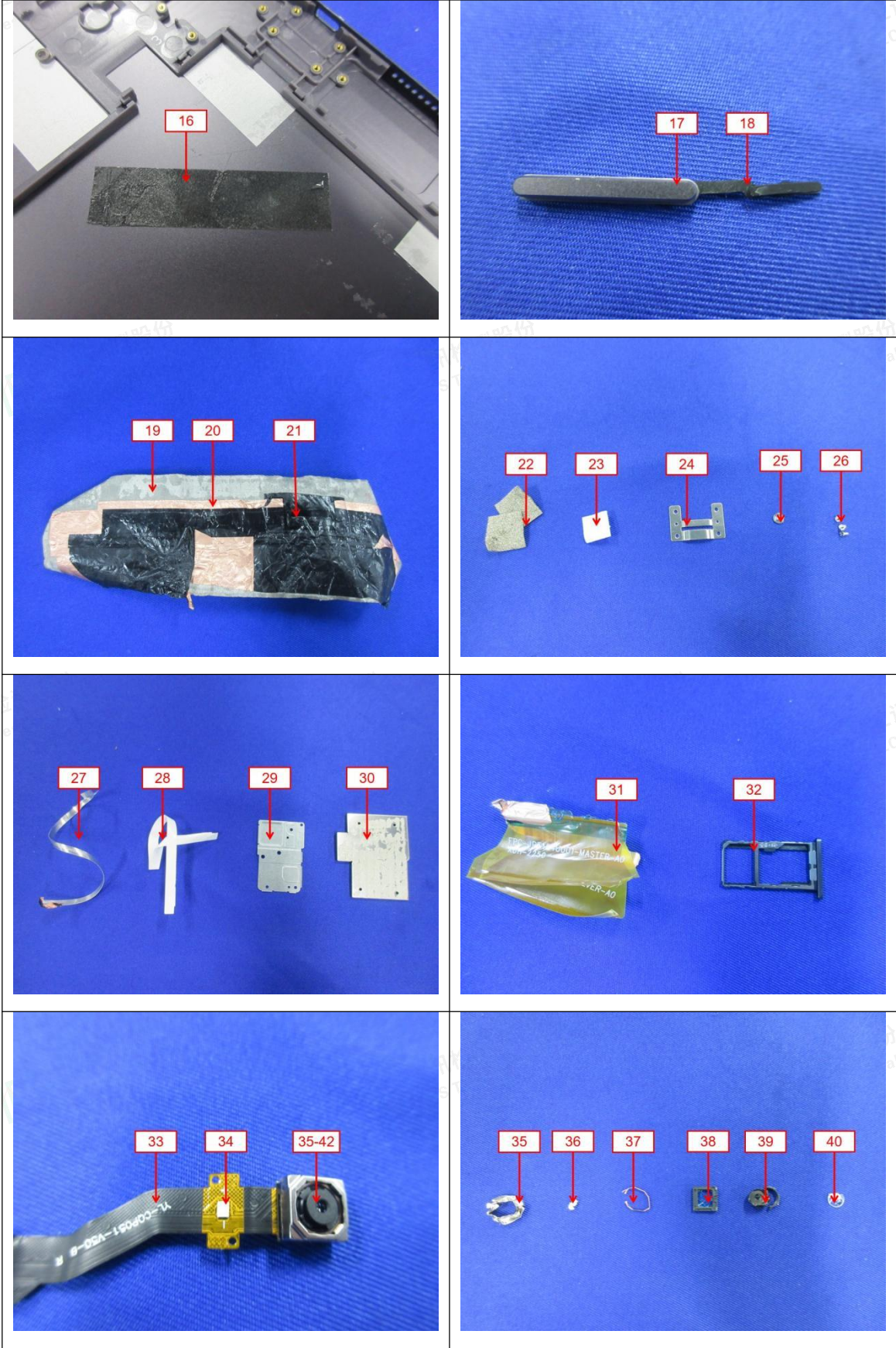


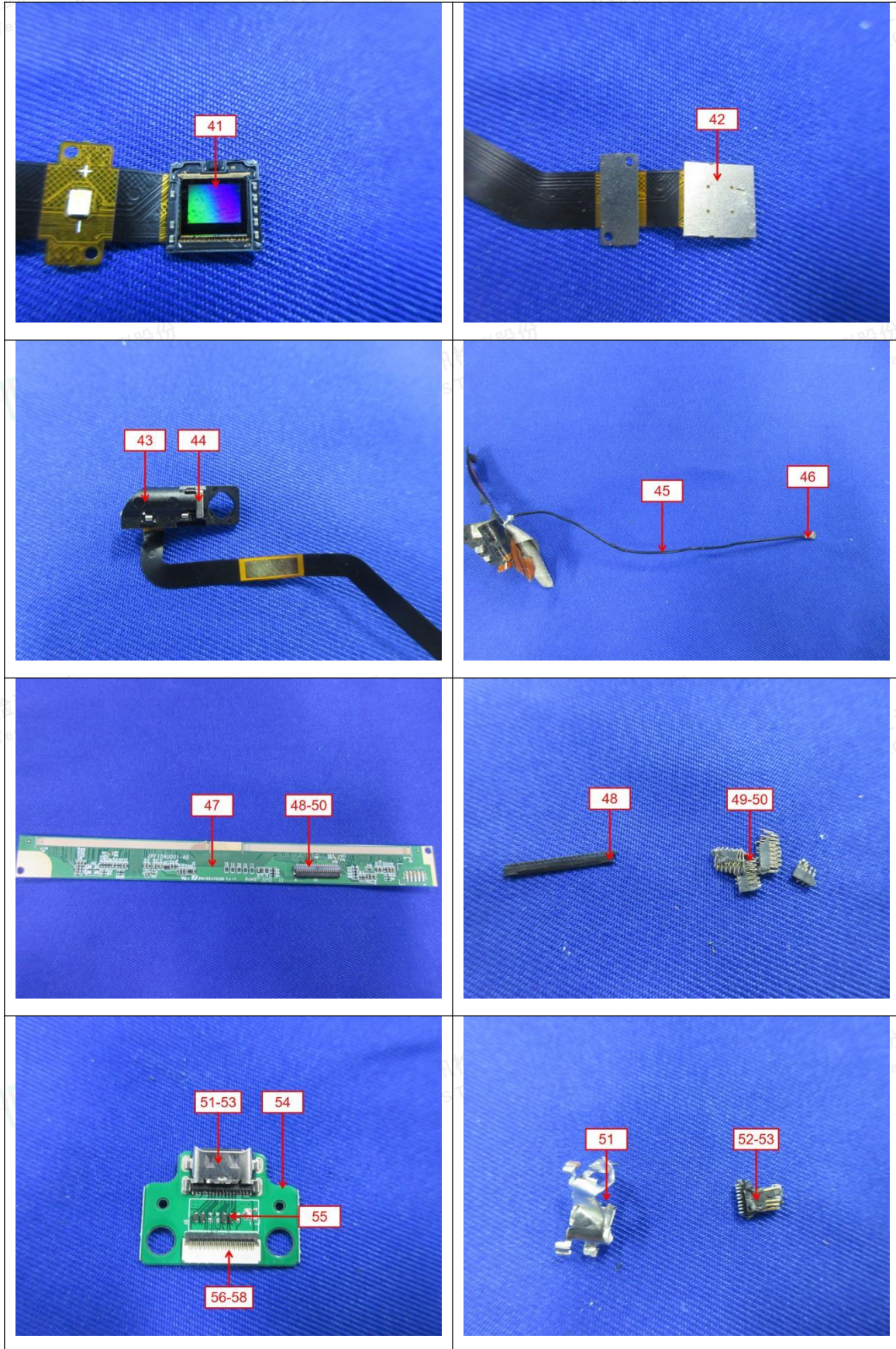
### The photo(s) of the sample

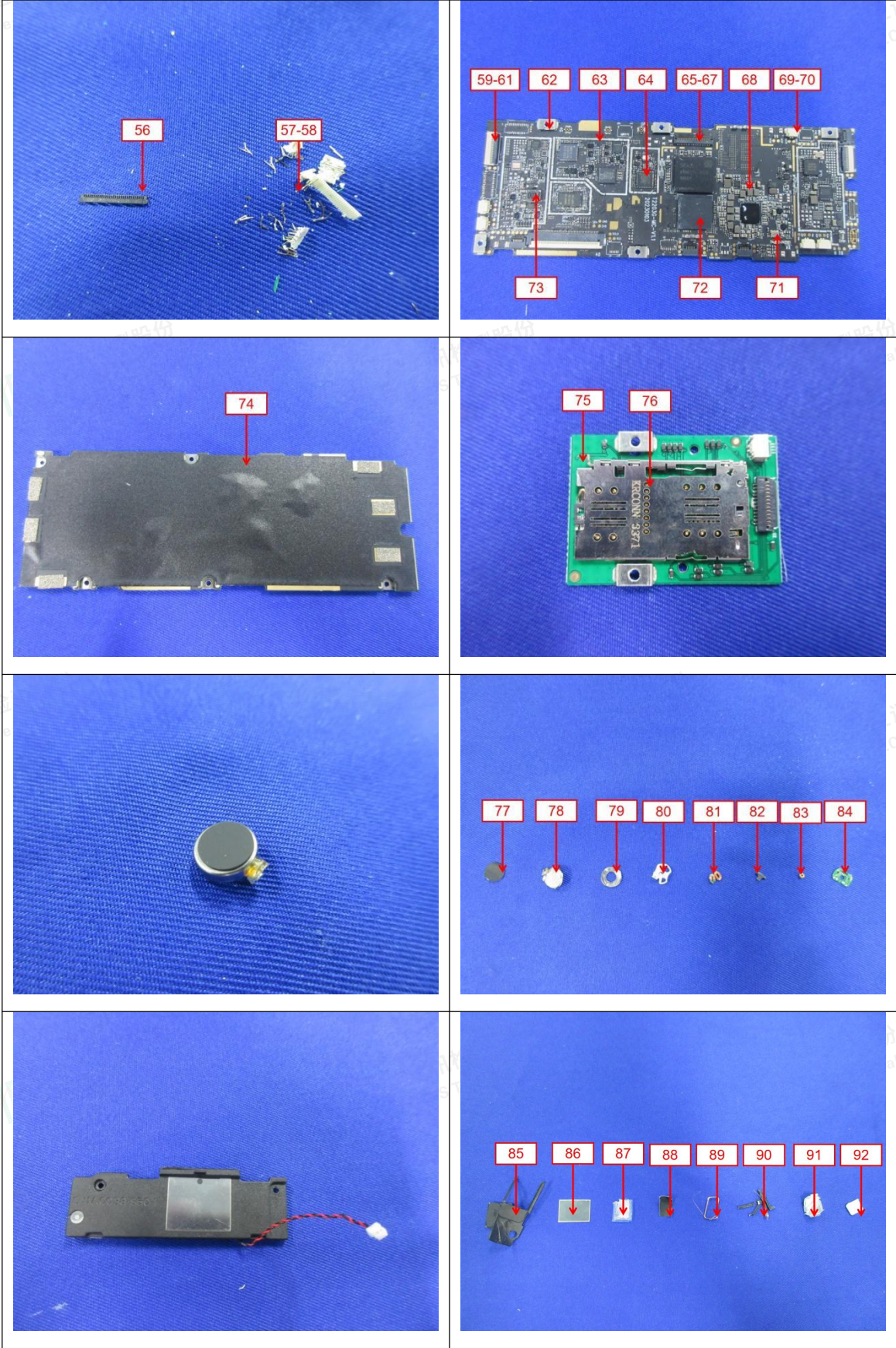


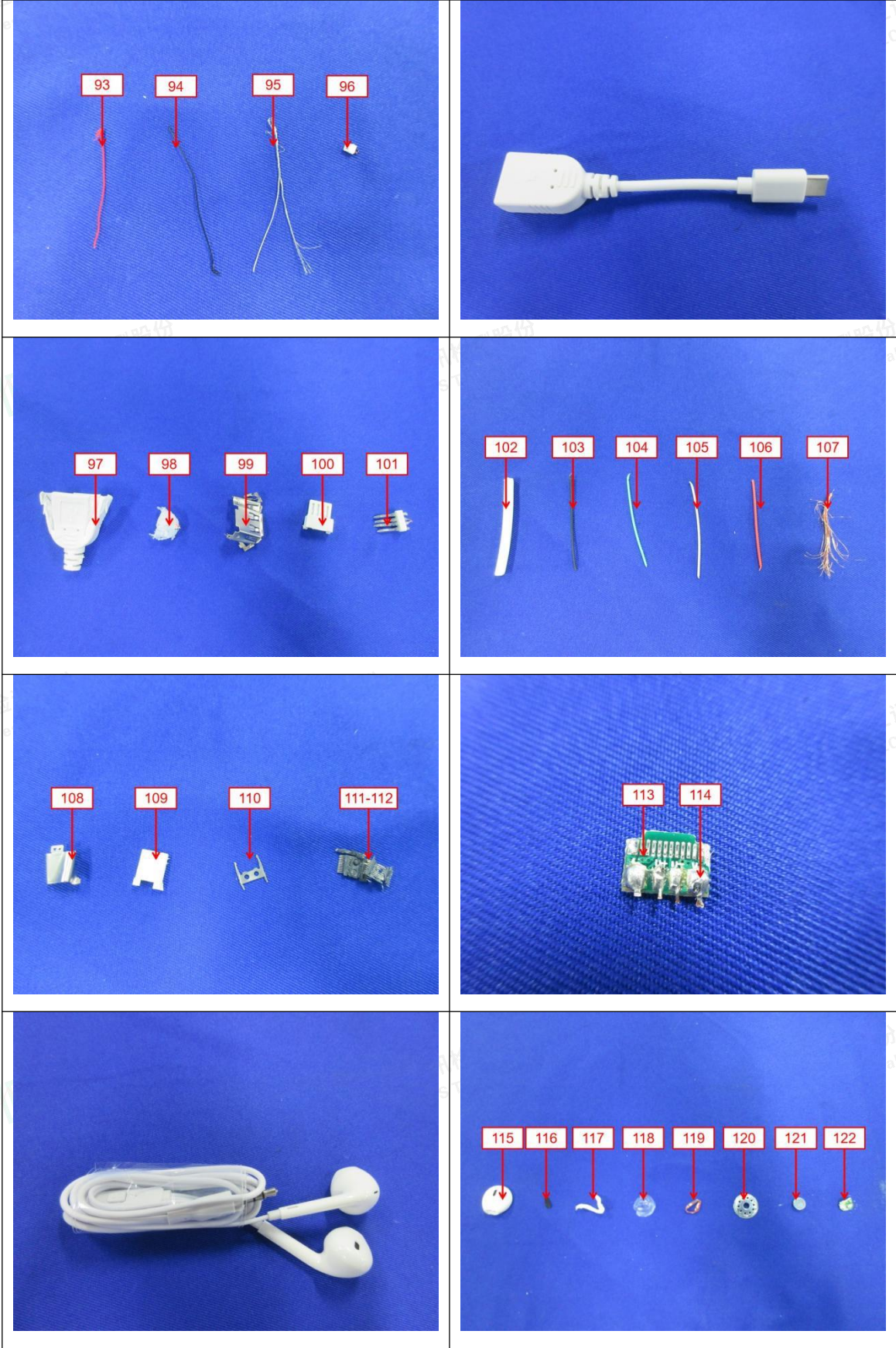


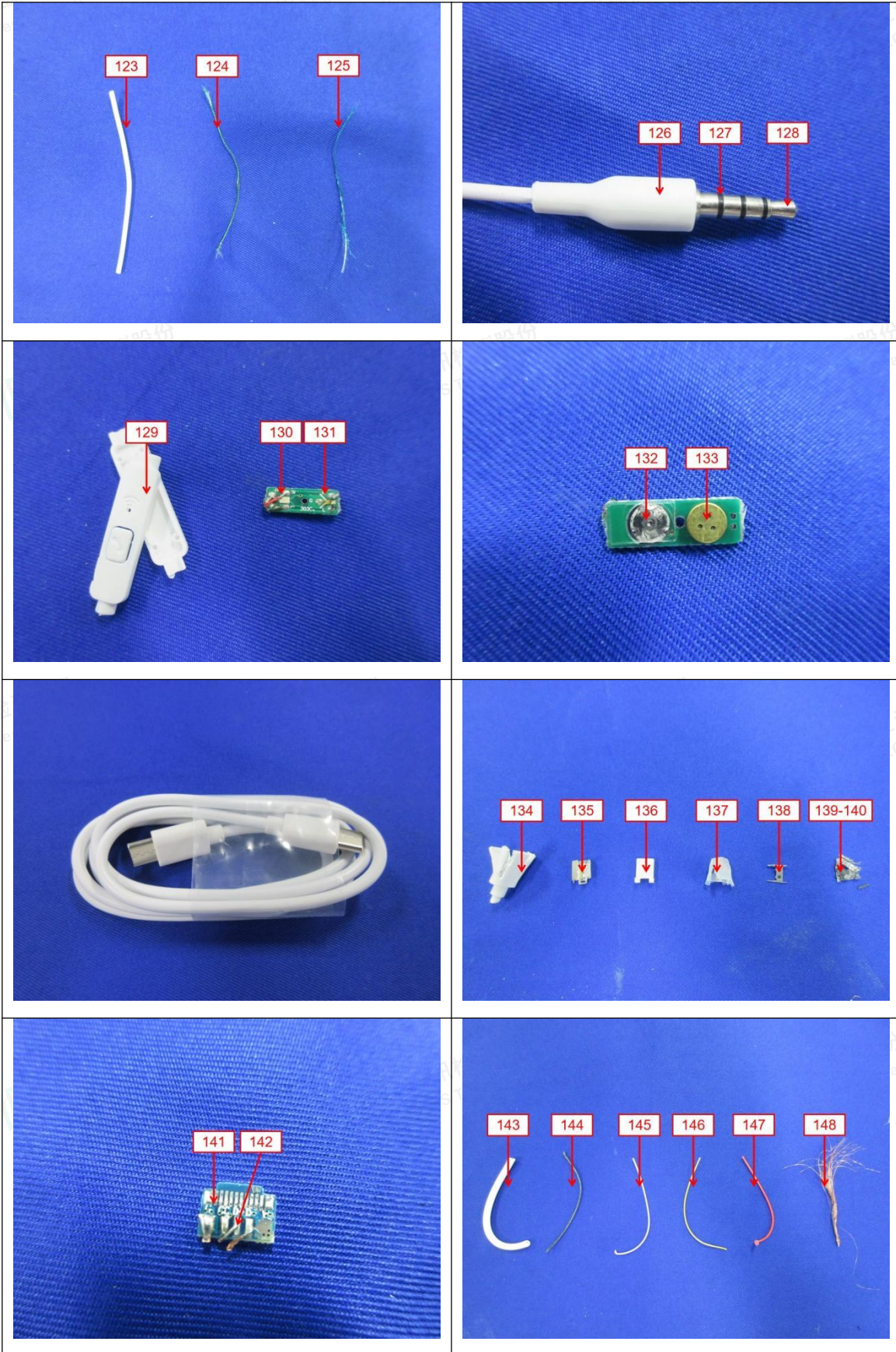














**Statement:**

1. The test report is invalid without the signature of the approver and the special seal for the company's report;
2. The company name, address and sample information shown on the report were provided by the applicant who should be responsible for the authenticity which are not verified by LCS;
3. The test results in this report are only responsible for the tested samples;
4. Without written approval of LCS, this report can't be reproduced except in full;
5. In case of any discrepancy between the corresponding Chinese and English contents in the test report, the Chinese version shall prevail.

\*\*\* End of Report \*\*\*

